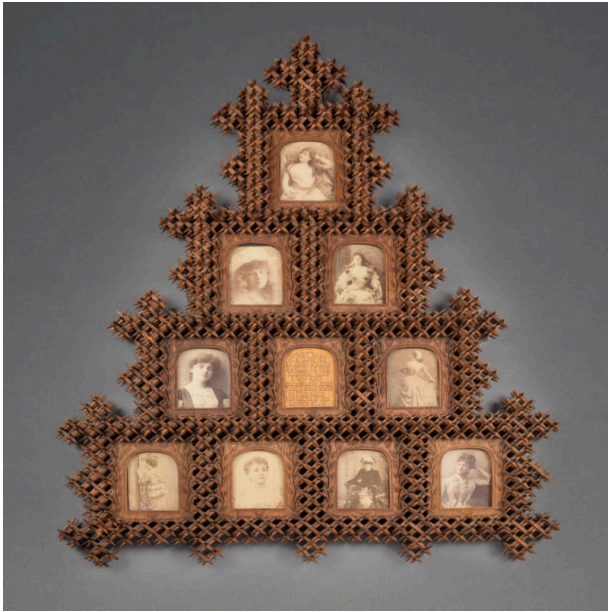


Basic Detail Report



Crown of thorns frame with portraits of London stage actresses

Date

c. 1927

Primary Maker

Charles Steijen

Medium

Wood (Spanish cedar), paper, glue, tape, metal

Description

"Crown of Thorns" or lattice type frame of dark stained small pieces of wood puzzle pieced together with glue in

pyramidal/ triangular shape; has ten floral carved wood openings, nine of which bear sepia toned photos of young women actresses ca. 1890s with their names punched beneath. Central opening in row of three is punched with the words "This picture frame was made by Charles Steijen Captain of the Brenton Reef Lightship. Wood Spanish Cedar from old cigar boxes. Photographs Favorites of the London Stage."

Dimensions

Overall: 39 3/16 x 30 7/8 x 3 1/8 in. (99.5 x 78.5 x 8 cm)