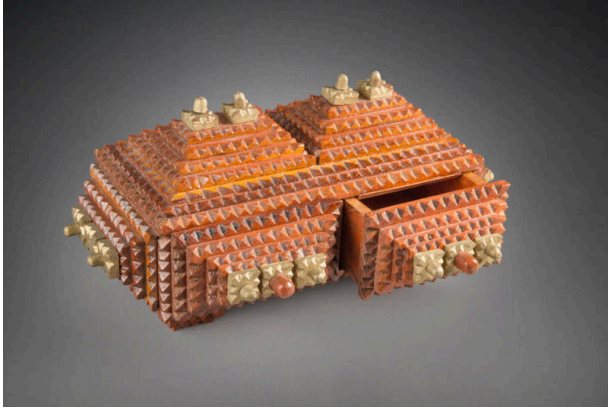


Basic Detail Report



Tramp art box with two drawers

Date

late 19th-early 20th Century

Primary Maker

Artist not recorded

Medium

Wood, stain, paint, metal

Description

Cherry stained low rectangular box (a) with two drawers (b-c). Back and top each have chip carved, stacked layers like elongated pyramids topped with gold squares (two on top and three on each back pyramid) with rounded knobs atop. The drawer fronts match the back but for larger center knobs, cherry stained. The sides each have one pyramid topped with three squares, but with knobs only on the outside two. Top of one layer of top is natural with clear varnish. Box sits on four short carved feet.

Dimensions

Overall: 4 7/8 x 10 1/4 x 6 3/8 in. (12.4 x 26 x 16.2 cm)