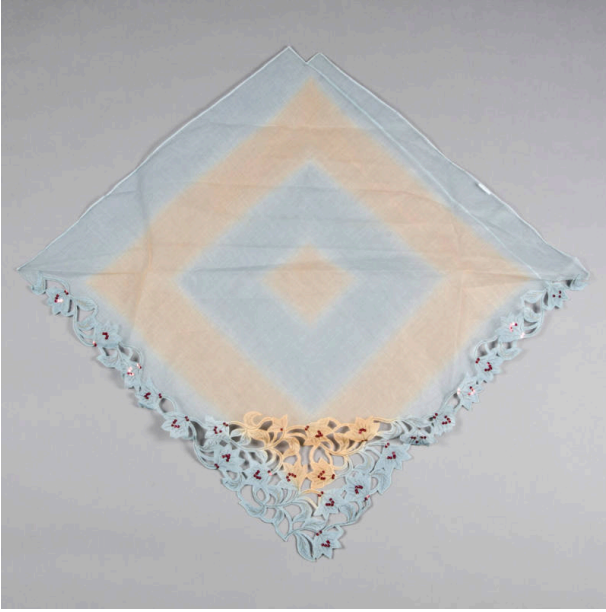


Basic Detail Report



Baro't saya shawl

Date

ca. 1965

Primary Maker

Artist Not Recorded

Medium

Pina, metallic thread, sequins

Description

Thin stiff fabric with floral and vine design in open work patterns, matches bodice & skirt. Silver metal sewn accents and red sequins. The shawl is over-dyed in blue

and orange folds to form triangle.

Dimensions

23 7/16 × 48 1/16 in. (59.5 × 122 cm)