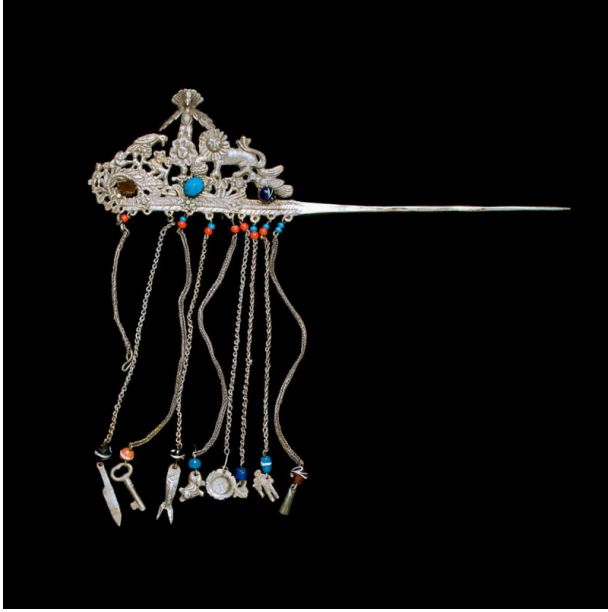


Basic Detail Report



Mantle Pin

Date

19th century

Primary Maker

Artist not recorded

Medium

Metal (silver), glass beads

Description

Large, cast, motif of monkeys, birds, lion and peacock with spread wings atop one end of a long, slender pin. The figural image set with 3 stones (brown, light blue and dark

blue). From 9 chains below dangle charms (knife, key, fish, animal, plate, etc.) topped with various colored beads.

Dimensions

9 3/4 x 10 1/4 in. (24.765 x 26.035 cm)