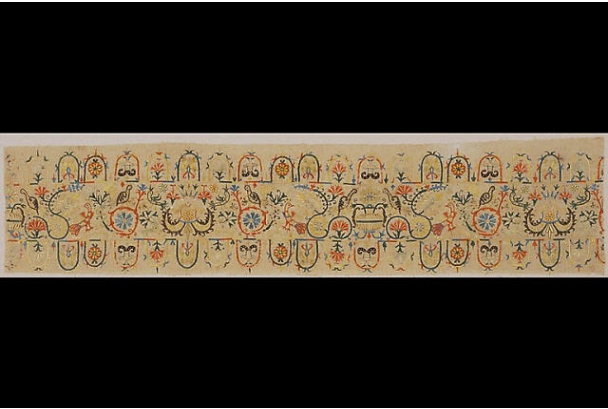


Basic Detail Report



Embroidery fragment from the Hem of a Skirt

Date
18th century

Primary Maker
Artist not recorded

Medium

Silk floss embroidery on a linen ground

Description

Silk embroidery on linen ground; the design has a running arabesque border with a variety of flowers, birds, animals, rabbits, serpents, and dogs; colors are red, green, yellow and blue on off-white ground.

Dimensions

51 1/2 × 11 1/2 in. (130.8103 × 29.2101 cm)