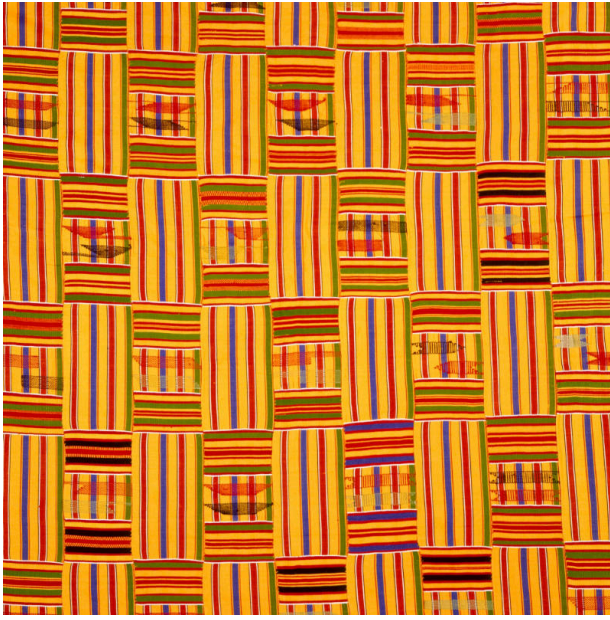


# Basic Detail Report

---



## **Kente**

### **Date**

c. 1960

### **Medium**

Cotton

### **Description**

Strip-weave, weft-faced bands. Strips of fabric in square-like pattern with narrow multicolored stripes within squares. Many bold, primary colors throughout. Fringe.

### **Dimensions**

149 5/8 × 74 13/16 × 1 3/4 in. (380 × 190 × 4.5 cm)