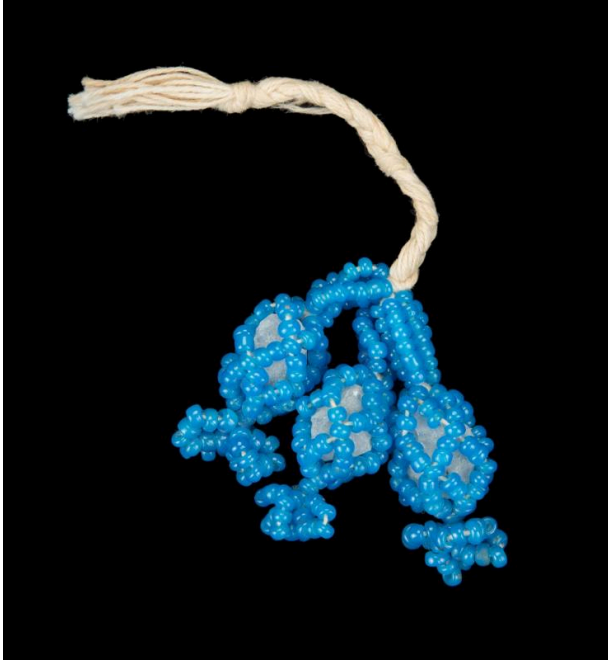


# Basic Detail Report

---



## Charm with protective blue beads and alum

### Date

c.1900

### Primary Maker

Artist not recorded

### Medium

Blue glass beads, alum, twine

### Description

Braided string at the end of which are 3 pieces of alum, each encased in beadwork. Blue beads are strung and worked into a netting around each chunk of alum.

### Dimensions

Overall: 2 3/8 in. (6 cm)