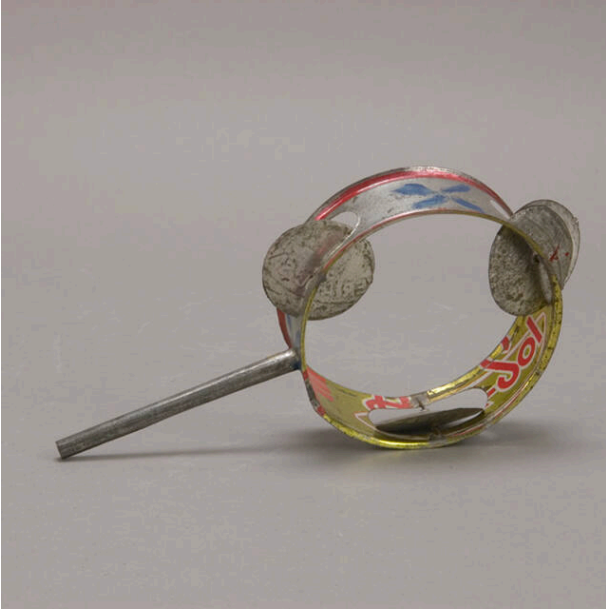


# Basic Detail Report

---



## Rattle

### Date

1973

### Primary Maker

Artist Not Recorded

### Medium

metal

### Description

Round frame attached to pole for holding. Two round tin pieces inserted in three openings in frame, so that they rattle when shaken. Frame made from Pemex can.

## Dimensions

Overall: 7 11/16 x 5 5/16 x 1 7/16 in. (19.5 x 13.5 x 3.7 cm)