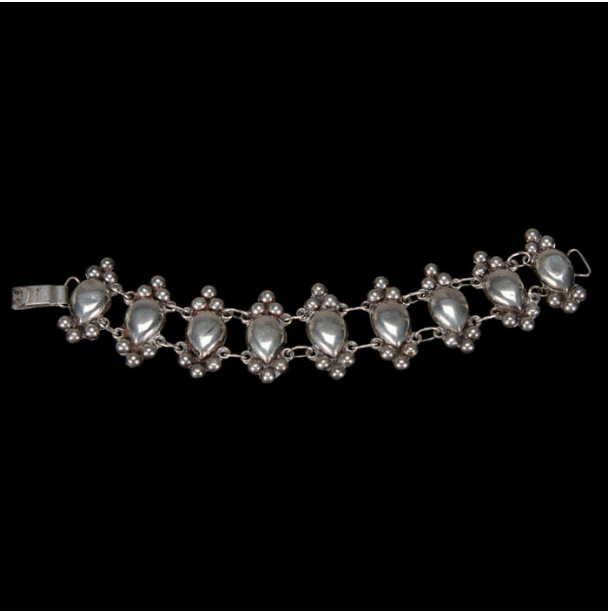


# Basic Detail Report

---



## Bracelet

**Date**

1940s - 1950s

**Primary Maker**

Artist Not Recorded

**Medium**

Metal (silver)

**Description**

Silver bracelet, elements linked by wire loops, bar and hook closure. Elements are teardrop shaped with three silver spheres top and bottom.

**Dimensions**

7 3/16 × 1 5/16 × 3/16 in. (18.3 × 3.3 × 0.4 cm)