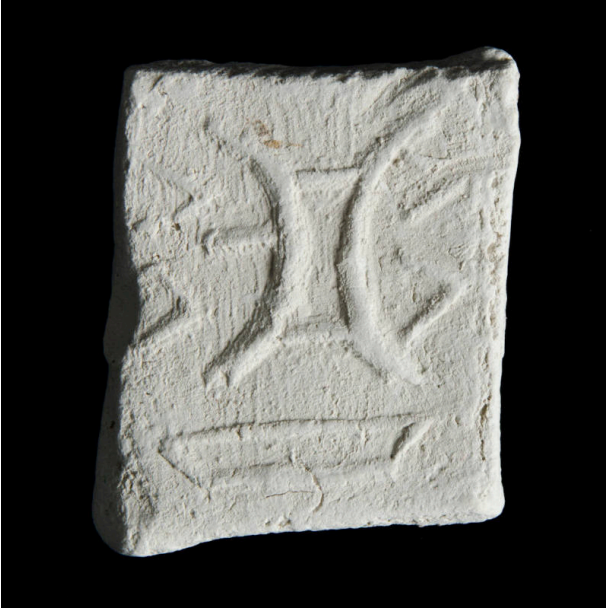


Basic Detail Report



Sacred clay tablet with abstract design

Date

ca. 1985

Primary Maker

Artist not recorded

Medium

Clay

Description

Tablet with abstract design. Hollow rectangular space in center is formed by closing off space between two inward curving lines with two short horizontal lines. Another short

horizontal line is attached to the inside of the arc on right. On both edges of tablet a linear wedge points left. Long, narrow trapezoid floats at top of tablet.

Dimensions

2 7/16 × 2 1/16 × 7/16 in. (6.2 × 5.3 × 1.1 cm)