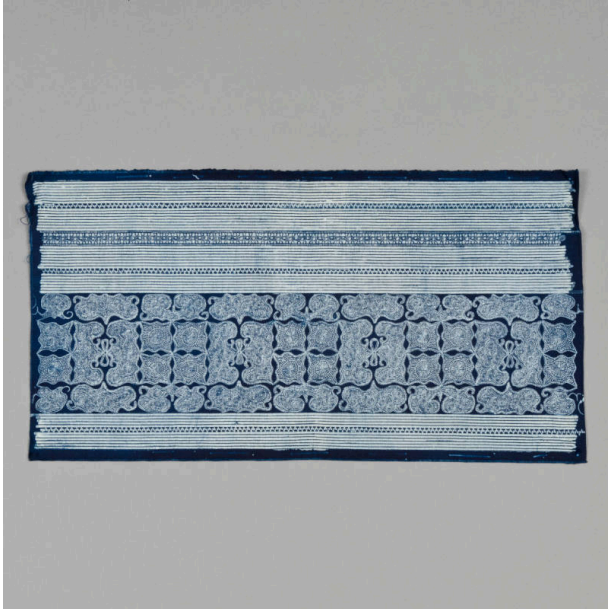


# Basic Detail Report

---



## Miao Man's Cuff

### Date

1960-1980

### Medium

Cotton, Indigo

### Description

An extremely delicate, symmetrical, batik pattern. Top and bottom borders have fine horizontal stripes interspersed with delicate geometrical patterns. The central area is made of four interconnected rows of four-part motifs with interior radiating forms, interspersed with larger wing-like forms.

### Dimensions

8 1/4 × 15 9/16 in. (21 × 39.5 cm)