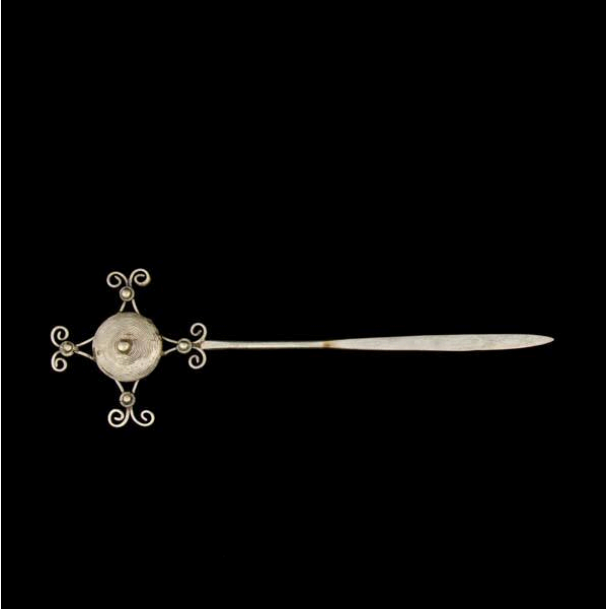


Basic Detail Report



2022.7.33ab and earrings .32ab

Dimensions

7 9/16 × 2 3/8 × 13/16 in. (19.25 × 6 × 2 cm)

Hair pin

Date

20th century

Primary Maker

Artist not recorded

Medium

Silver

Description

Silver hair pin. Double-faced design, same on both sides. Central coil with beaded top, curled extensions at compass points. Coil recalls design on Dong pieces A.