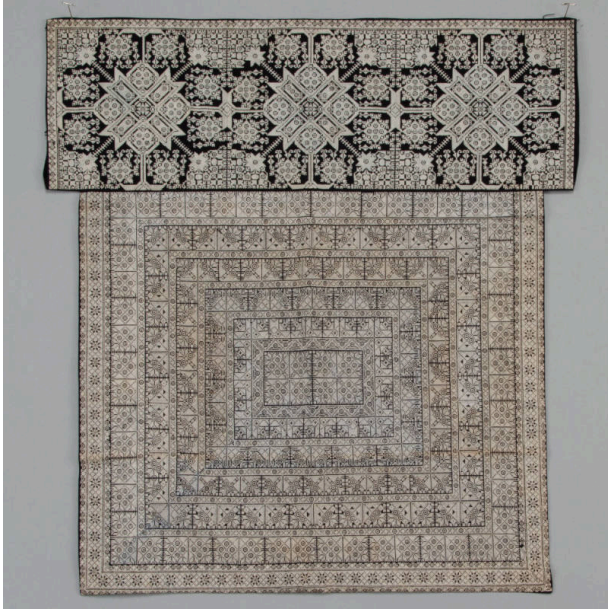


Basic Detail Report



apron

Date

20th century

Primary Maker

Artist Not Recorded

Medium

cotton

Description

Apron of black cotton with overall ultrafine white embroidery. The upper section has larger scale motifs, while the lower portion is has finer square motifs. The

backing is blue cotton. See A.2022.7.74 for another example of this style.

Dimensions

22 1/2 × 21 in. (57.1501 × 53.3401 cm)